

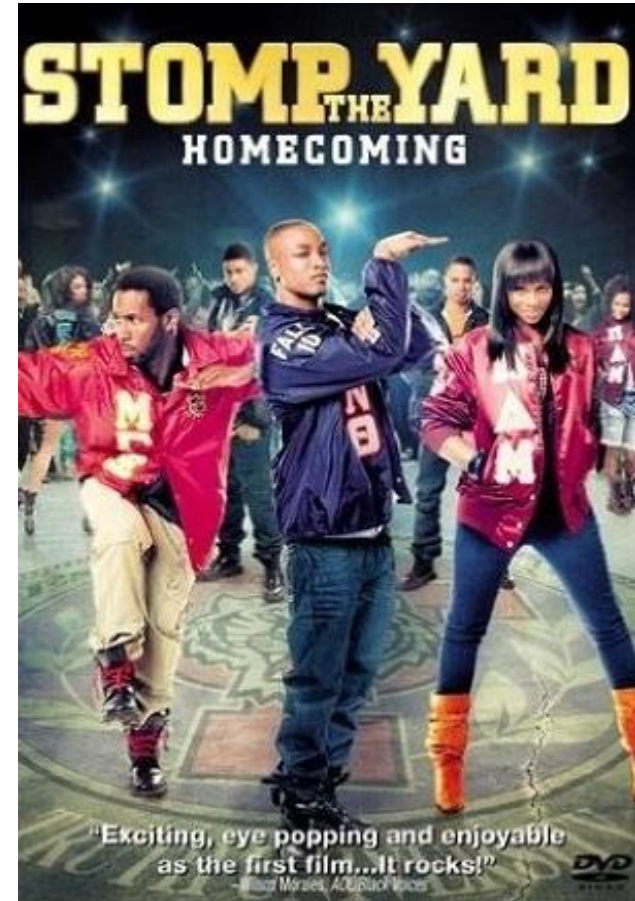
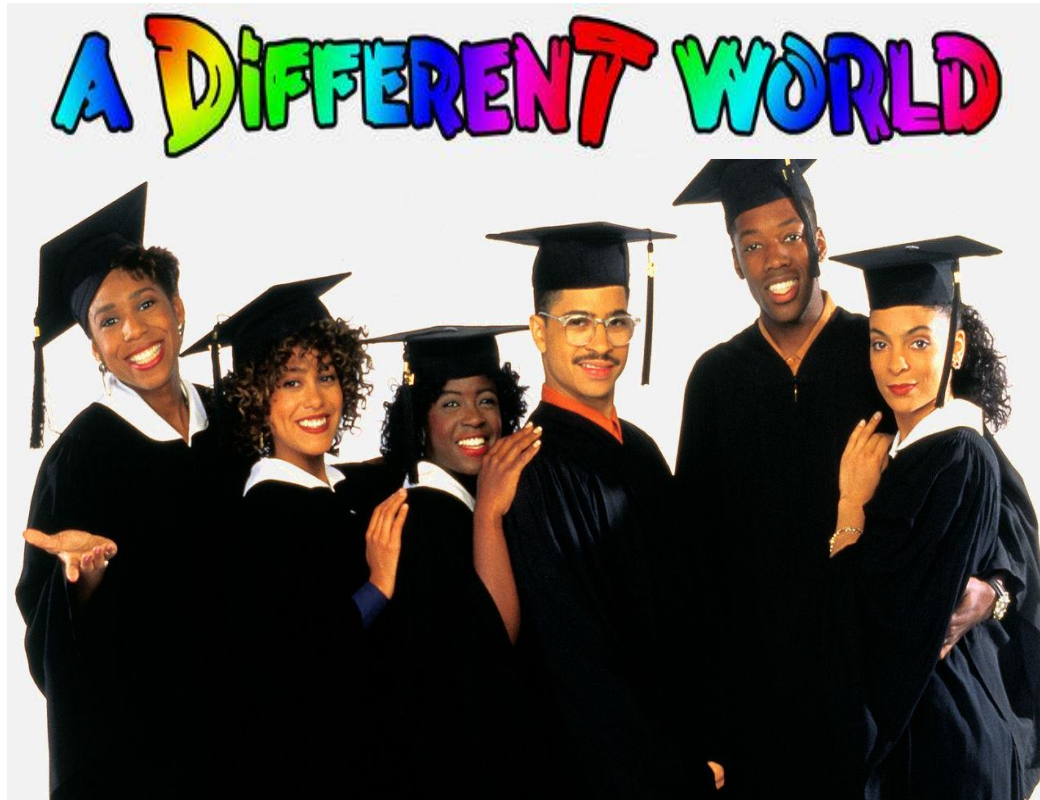
#BlackCollegesMatter

Understanding Historically Black Colleges & Universities



Iva Stewart- Barre, C' 2011
Spelman College Admissions Counselor
istewart@spelman.edu

True or False: Myths about HBCUs



What is an HBCU?

Historically
Black
College &
Universities

HBCUs offer admissions to **ALL** students regardless of race.

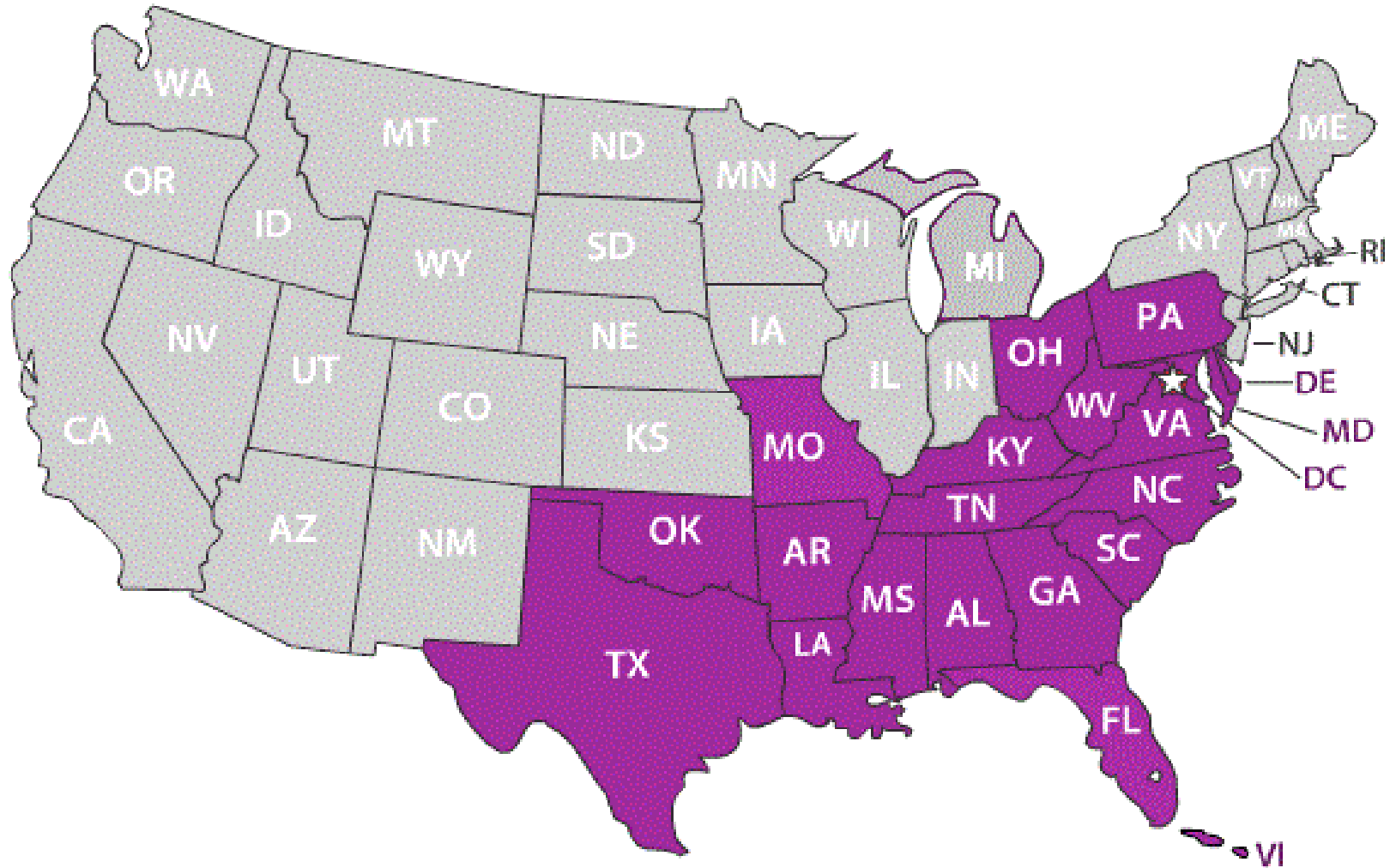
The Higher Education Act of 1965 defines a HBCU as an institution:

Established prior to 1964.

Principal mission is to educate Black Americans.

Fully accredited by a nationally recognized accrediting agency.

Locations



Why are there HBCUs: Historical Context

- ▶ American Slavery
 - ▶ Restricted enslaved people from education: fear of communication, reading abolitionist material, or forging freedom papers
 - ▶ Reading wasn't widely prohibited in 1700s. Reading was used for Christian conversion
- ▶ Anti-Education Laws
 - ▶ 1831 – Nat Turner Enslaved Revolt
 - ▶ 1836 – Strict education prohibition for enslaved people across the south. Reading and writing illegal for enslaved people. High fines for those caught educating enslaved people.
- ▶ Education for African-Americans before Civil War.
 - ▶ Schools for African-Americans in New York (1780s-1827), closed with integration
 - ▶ First HBCU was established in 1837- Cheyney University
 - ▶ Lincoln University (1857) first HBCU to give degrees
 - ▶ Wilberforce University (1856) is first HBCU founded and ran by Blacks
- ▶ Second Morrill Act in 1890
 - ▶ Separate but equal land grants universities established for African-Americans

Colleges with a Special Focus

- ▶ Arts Colleges - includes conservatories
- ▶ Single Sex Institutions – Women's Colleges and Men's Colleges
- ▶ Religiously Affiliated Colleges – may be historical or be a part of campus culture
- ▶ Specialized Mission Colleges – HBCUs and Hispanic Serving Institutions (HSI)



Types of HBCUs

Private

Public

Four-Year Colleges

Universities

Community Colleges

Technical Colleges

Professional Schools

Single Sex

Post Secondary Institutions

Research Institutions

Types of HBCUs: Private vs. Public

- ▶ Public institution:
Predominately funded by national or state governments.

Private College:
Not funded by local, state or national government. Funded through student costs and independent sources



Types of HBCUs: College vs. Universities

Colleges:

Offers 4-year baccalaureate degrees only.



Universities:

Offers baccalaureate, post-baccalaureate and professional programs.



Type of HBCUs: Professional Schools



Interdenominational Theological Center

Morehouse School of Medicine

Meharry Medical College

Types of HBCUs: Community College vs Technical Schools

Community Colleges

- Bishop State Community College
- Clinton Junior College
- Coahoma Community College
- Gadsden State Community College
- Hinds Community College-Utica
- Lawson State Community College-Birmingham Campus
- Shelton State Community College
- Southern University at Shreveport
- St. Philip's College

Technical Schools

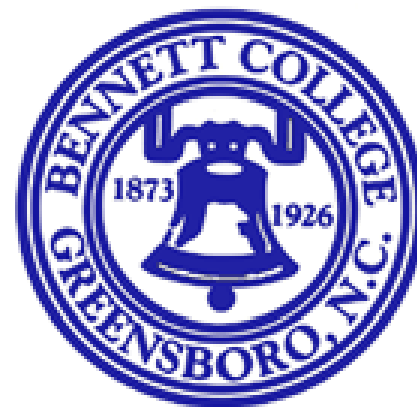
- Denmark Technical College
- H Council Trenholm State Technical College
- J F Drake State Technical College

Type of HBCUs: Single Sex Colleges

Morehouse College

Bennett College

Spelman College



Diversity at HBCUs

School name (state)	Black	Asian	Hispanic	White	American Indian	International	U.S. News historically black college rank
Bluefield State College (WV)	10.2%	0.2%	1.2%	85.1%	0.1%	2.6%	50 (tie)
West Virginia State University	11.7%	0.4%	0.5%	60.8%	0.5%	0.5%	41 (tie)
Kentucky State University	61.8%	0.6%	1.3%	19.8%	0.2%	0.3%	38 (tie)
Fayetteville State University (NC)	67.1%	1.2%	6.0%	16.6%	2.1%	0.8%	28 (tie)
Johnson C. Smith University (NC)	72.8%	0.1%	6.0%	0.6%	0.1%	4.4%	17
University of Maryland—Eastern Shore	73.6%	1.1%	2.0%	10.6%	0.1%	3.5%	23 (tie)
Delaware State University	74.7%	0.7%	5.6%	11.0%	0.3%	2.4%	13 (tie)
Elizabeth City State University (NC)	74.7%	0.4%	0.7%	14.3%	0.5%	0.0%	20
Tennessee State University	76.5%	1.1%	1.3%	15.5%	0.2%	4.7%	21 (tie)
Xavier University of Louisiana	77.3%	10.3%	2.3%	4.0%	0.3%	2.1%	6

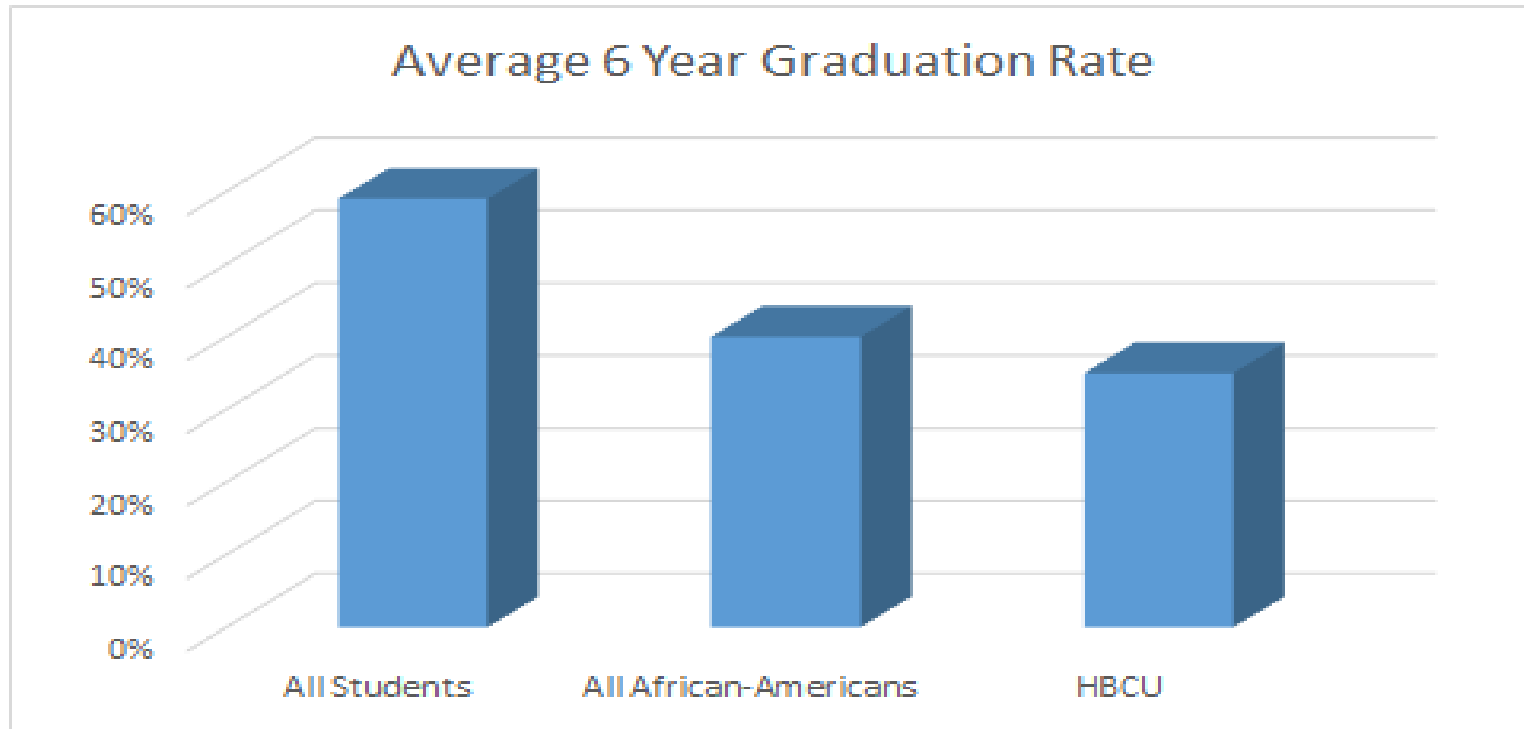
Funding Inequalities

Table 1. Total amount of federal funding awarded to all IHEs and to HBCUs, and percentage of IHE allocations awarded to HBCUs: FY 2007–13

Fiscal Year	IHEs	HBCUs	% HBCU Share
2007	\$117,656,478,000	\$3,644,896,348	3.1%
2008	\$134,479,809,000	\$3,964,987,750	2.9%
2009	\$174,472,081,000	\$4,780,696,771	2.7%
2010	\$191,767,661,000	\$5,083,932,493	2.7%
2011	\$184,069,491,878	\$5,196,377,927	2.8%
2012	\$180,294,409,130	\$4,794,956,403	2.7%
2013	\$172,369,578,639	\$4,758,941,493	2.8%

Source: Data was provided by participating federal agencies under Presidential Executive Order 13532 to the White House Initiative on HBCUs.

Graduation Rates



2013

All Students – 59%

All African-Americans – 40%

All HBCU – 35%

National Center for Educational Statistics

HBCU Fast Facts

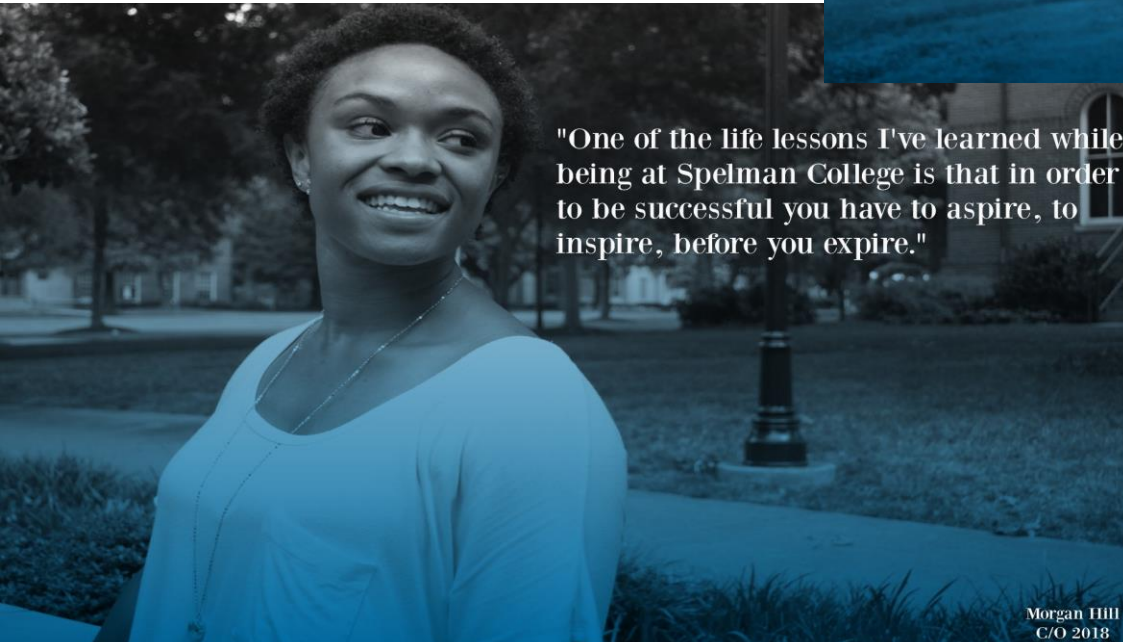
- Eight of the top ten schools that produce African-American engineers are HBCUs (50% of the nations Black engineers are graduates from HBCUs)
- 42% percent of all Ph.D.s earned each by year by African- Americans are earned by graduates of HBCUS.
- 18 of the top 23 producers of African Americans who go on to receive science related Ph.D.s are HBCUs
- 65% of all Black physicians graduated from HBCUs
- 50% of all Black women who earn PhD in the STEMS come from two HBCUs
- HBCUs reinforce a sense of self in their students, which allows them to succeed beyond undergraduate experiences

Why Spelman?



"I wanted an environment that would help me grow academically, menatally, emotionally and spirtually, thus far, Spelman College has done just that."

Breonna July
Computer Science
C/O 2018



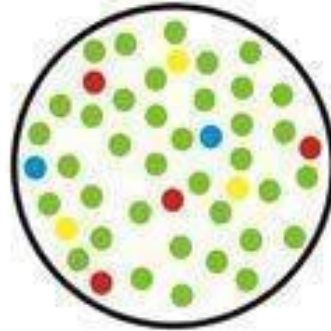
"One of the life lessons I've learned while being at Spelman College is that in order to be successful you have to aspire, to inspire, before you expire."

Morgan Hill
C/O 2018

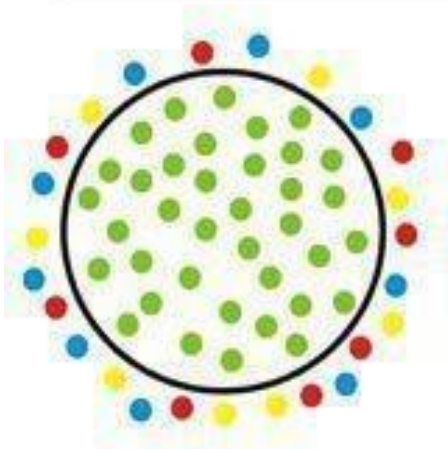
Famous HBCU Alumni

- ▶ Toni Morrison –Howard
- ▶ Dr. Martin Luther King Jr. - Morehouse
- ▶ Oprah Winfrey –TSU
- ▶ Spike Lee – Morehouse
- ▶ Samuel L. Jackson – Morehouse
- ▶ Dr. Ruth J Simmons – Dillard
- ▶ Ed Bradley – Cheney
- ▶ Thurgood Marshall – Lincoln (PA) and Howard Law
- ▶ Jerry Rice – Mississippi Valley
- ▶ Jesse Jackson – North Carolina A&T
- ▶ Ralph Ellison – Tuskegee
- ▶ Marian Wright Edelman – Spelman
- ▶ Booker T. Washington – Hampton
- ▶ Rosa Parks – Alabama State
- ▶ Tara P. Henson – Howard University
- ▶ Terrence J – NC A&T State University
- ▶ Anthony Anderson – Howard University
- ▶ Keenen Ivory Wayans- Tuskegee
- ▶ Wanda Sykes – Hampton
- ▶ Sean Combs –Howard
- ▶ Common –FAMU
- ▶ Erykah Badu- Grambling
- ▶ Michael Strahan –Texas Southern
- ▶ Evelynn Hammonds –Spelman
- ▶ Pam Oliver -FAMU

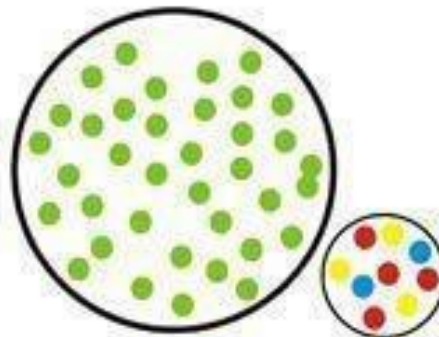
Final Thoughts



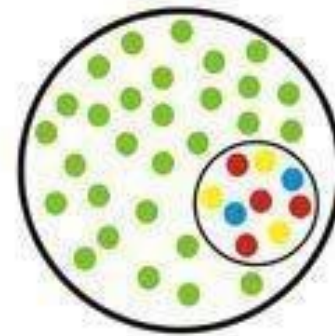
Inclusion



Exclusion



Segregation



Integration

THANK YOU

Iva Stewart-Barre -
istewart@spelman.edu

404.270.5194 (direct)

404.270.5193 (office)